

## TEST REPORT N. 20/000062077

date of issue 17/02/2020

Customer ID 0083007

Messrs  
Shanghai Telaomu Technology  
Co.,Ltd  
NUMBER 2012 ROAD JINBI  
201400 FENGXIAN DISTRICT  
Cina

### Sample information

Acceptance number 20.501465.0002  
Delivered by UPS on 07/01/2020  
Receiving Date 07/01/2020  
Place of origin Shanghai Telaomu Technology Co.,Ltd NUMBER 2012 ROAD JINBI 201400 FENGXIAN DISTRICT Cina  
Sample Description CELL PHONE SHELL - DONG GUAN GLOBAL ECHO TECH CO. Ltd

### Sampling information

Sampled by Customer

**ANALYTICAL RESULTS**

	Value/ Uncertainty	Unit of measure	LoQ	LoD	Start/end date of analysis	Op. units	Row
<b>ON SAMPLE AS IT IS</b>							
MATERIAL IDENTIFICATION (FT-IR) Met.: AR 2015/244/A-CAP.7	view attached report				17/01/2020- -28/01/2020	02	1 2

**Operative units**

Unit 02 : Via Castellana Resana (TV)

**Information provided by the client**

Sampled by: Customer  
 Pick Address: Shanghai Telaomu Technology Co.,Ltd NUMBER 2012 ROAD JINBI 201400 FENGXIAN DISTRICT Cina  
 Description: CELL PHONE SHELL - DONG GUAN GLOBAL ECHO TECH CO. Ltd

<b>Chemical responsible</b>
<b>Dott.ssa Barbara Scantamburlo</b> Chimico Ordine dei chimici - Provincia di treviso Iscrizione n. A351
Num. certificato 18131956 emesso dall'ente certificatore ArubaPEC S.p.A. NG CA 3, ArubaPEC S.p.A., IT

- If not otherwise specified, the uncertainty is extended and has been calculated with a coverage factor k=2 corresponding to a probability interval of about 95%. - LoD is the detection limit and identifies a confidence interval of zero with a probability interval of about 99%. - LoQ is the limit of quantification. "n.d" is not detected and indicates a value inferior to the LoD. "traces (X)" means a value between LoD and LoQ, this value is indicative. "<x" or ">x" indicate inferior or superior to the measurement field of the test. - If not differently specified, the sums are calculated by lower bound criteria (L.B.). - In case of alteration of the sample the laboratory declines any responsibility on the results that can be influenced by the deviation in case the customer asks for the execution of the test anyway. - If the sampling is not carried out by the laboratory staff, the results obtained are considered referring to the sample as received and the laboratory declines its responsibility for the results calculated considering the sampling data provided by the Customer. The name and contact information of the Customer are always provided by the Customer.

**REPORT N. 1 ANNEX TO TEST REPORT 20/000062077**

---

**RESEARCH ANALYSIS**

**SAMPLE INFORMATION**

ID Sample: 20.501465.0002

Sample description: CELL PHONE SHELL - DONG GUAN GLOBAL ECHO TECH CO. Ltd

Photo



**PERFORMED TESTS**

- FT-IR analysis for the evaluation of the absorption spectrum.

**METHOD**

Research analysis

The analysis was performed on the white surface considering the product as homogeneous and mono-material.

## Acquisition of the FT-IR spectrum

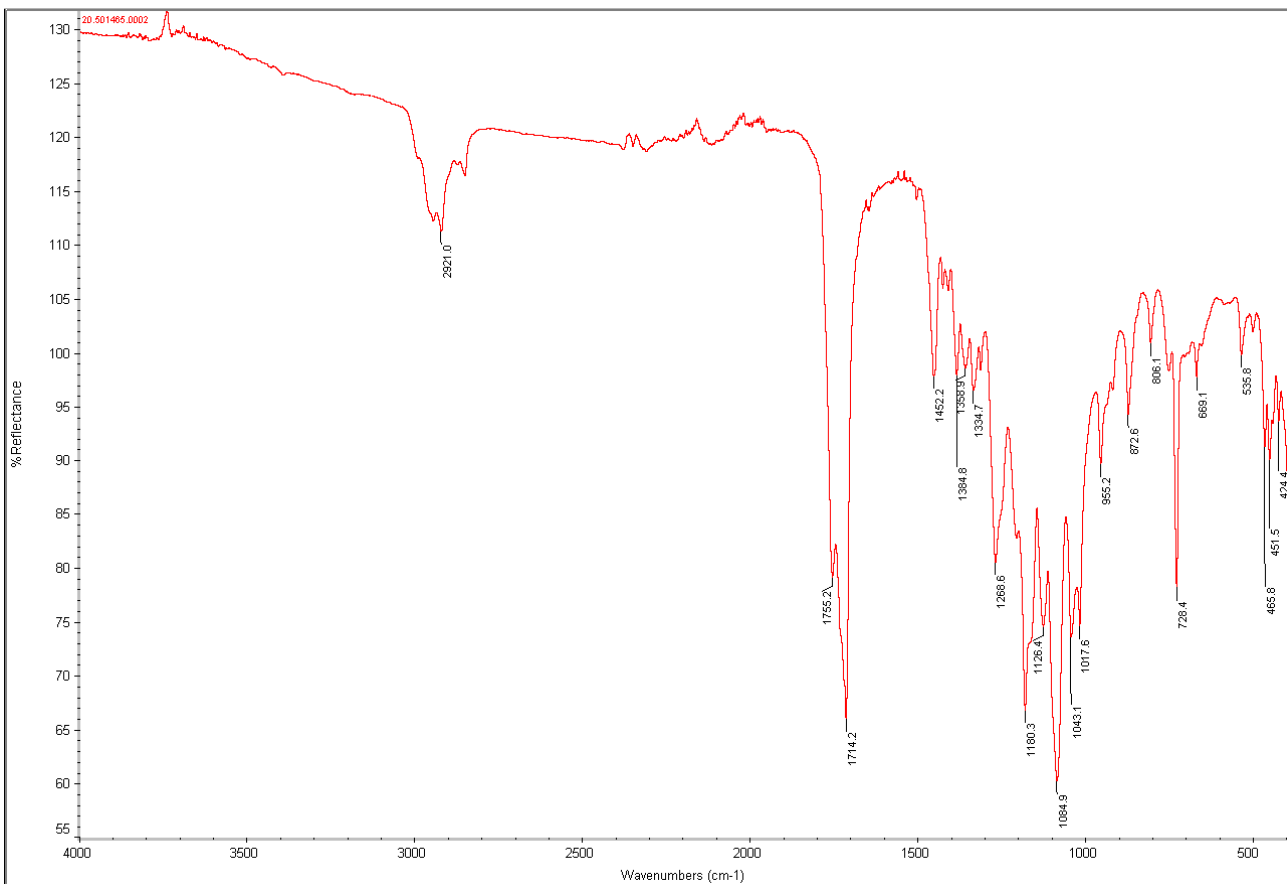
### PRINCIPLE OF THE METHOD

Instrument used: FT-IR Nexus with diamond crystal

The material was scanned from 4000 to 400 cm<sup>-1</sup> FT-IR with  $\mu$ -ATR using a diamond crystal.

### ACHIEVED RESULTS

The spectrum obtained is shown below.



**PEAK LIST**

Position:	424.4	Intensity:	93.542
Position:	451.5	Intensity:	89.948
Position:	465.8	Intensity:	91.271
Position:	535.8	Intensity:	99.769
Position:	669.1	Intensity:	97.726
Position:	728.4	Intensity:	78.120
Position:	806.1	Intensity:	100.851
Position:	872.6	Intensity:	94.202
Position:	955.2	Intensity:	89.514
Position:	1017.6	Intensity:	74.509
Position:	1043.1	Intensity:	73.472
Position:	1084.9	Intensity:	60.101
Position:	1126.4	Intensity:	74.451
Position:	1180.3	Intensity:	66.686
Position:	1268.6	Intensity:	80.435
Position:	1334.7	Intensity:	96.507
Position:	1358.9	Intensity:	98.555
Position:	1384.8	Intensity:	97.888
Position:	1452.2	Intensity:	97.812
Position:	1714.2	Intensity:	65.868
Position:	1755.2	Intensity:	78.948
Position:	2921.0	Intensity:	111.205